

# Exposition Will Present Scientific, Artistic and Cultural Exhibits

## All Phases of World's Progress Will Be Represented by Superb Displays in Brilliant Settings

Science, art and culture will be represented at San Diego's \$20,000,000 Exposition, opening May 29 by numerous attractive exhibits from all parts of the world. In the many beautiful palaces in Balboa park much will be presented to delight and amaze the millions of visitors expected to attend the great spectacle.

Those interested in painting and sculpture will see in the gorgeous Palace of Fine Arts one of the most magnificent collections of masterpieces in the world. Such famed works as Rubens' "The Holy Family," a painting for which the artist used his own family as models, are in these galleries. Also, there is Cranach's "Saxon Courtier," the "Golden Wedding" of Valentin de Zubiature; Zubaron's "St. Jerome Receiving Heavenly Inspiration," El Greco's "St. Francis of Assisi," Zuloaga's "Antonio" and many others.

**Moderns Featured**  
For the first time in the Southland, emphasis will be laid on the best works of Southwestern artists and of the greatest moderns of old Spain.

In the Yosemite Valley, internationally famous pictures done by Albert Bierstadt, will be loaned for exhibition during the Exposition by the New York Public Library. Also, there will be the finest works of Toby Rosenthal, William Keith, Thomas Hill, Winslow Homer, George Bellows, Robert Henry and George Luks.

One of the treasures of the Palace of Fine Arts which will be exhibited during the fair is a Gobelins, made in 1622 to the order of Louis XIV of France, depicting in silk and wool the sacking of the village of Pfalz.

In the many exhibit galleries of the Palace of Fine Arts will be found hundreds of rare and beautiful pieces of sculpture, glazed pottery and craft work.

In contrast nearby stretches the vast expanse that makes up the Exposition Zoological Gardens.

**Houses 2500 Specimens**  
Housing more than 2500 specimens, this zoo is second in importance only to the Bronx Zoo in New York, and in that respect the Bronx Zoo leads only in the number of animals.

The Exposition Zoological Gardens are unique in that the only two mountain gorillas in captivity are maintained there. These were captured in the upland country of the Belgian Congo by Mr. and Mrs. Martin Johnson who recently made a tour of the zoo with officials to plan new exhibits for the Exposition.

There, too, are tropical penguins, condors and vultures, many specimens of the Andean condor, Nubian ostriches, African water buck, American pronghorn antelope and Siberian brown bear.

The seal pond contains the only herd of Galapagos fur seals in captivity.

**Seals For Expo**  
Capt. G. Allan Hancock, millionaire explorer and zoologist, is planning a special trip to Guadalupe Island, Mexico, aboard his yacht, the *Weymouth*, to capture specimens of the rare Northern Elephant Seal for exhibition during the Exposition.

Recently Capt. Hancock returned from the Galapagos Islands with more than 50 specimens for exhibition in the Zoological gardens during the Exposition.

The Zoological Gardens of America's Exposition—1935 are distinguished by one outstanding "only." This zoo is the only one in the world to have a woman director. She is Mrs. Belle Bencherly who entered the zoo as a bookkeeper and in a few years rose to her present position.

**Photography Salon**  
In the Palace of Science will be the Fifth International Salon of Photography, staged under the auspices of America's Exposition, the Camera Enthusiasts and Pictorialists of San Diego.

Distinguished boards of judges will make awards in the various groups which include pictorial, scientific, natural color, transparencies, professional portraiture and commercial photography.

This salon is regarded as the most important event of its kind to be held in the United States this year. Gold and silver medals and ribbons will be awarded in all classes by John Sirigo, official photographer of the Exposition. More than 10,000 invitations to participate in the salon have been mailed to all parts of the world.

In addition to wonders of the modern world, the Palace of Science contains examples of antiquity which will thrill the collector and startle the visitor.

**Life Masks Displayed**  
One of the halls contains a series of life masks and busts ranging from

**Primitive Man**  
Casts made after careful study show the various races of mankind in the Exposition's interesting Palace of Science.

**WYOMING PLEDGES SUPPORT OF EXPO**  
Wyoming's representation in the California Pacific International Exposition here has been assured with Gov. Leslie A. Miller appointed honorary vice president.

Joining with the chief executives of nearly a score of western states, Governor Miller pledged the support of Wyoming to California in presenting the \$10,000,000 international spectacle which will open May 29.

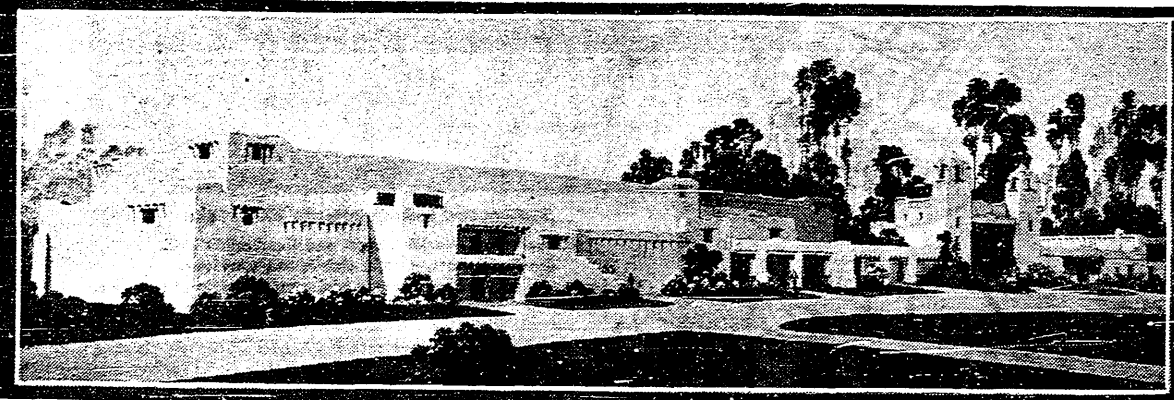
The Exposition, to which upwards of 6,000,000 visitors are expected to come, is designed to stimulate recovery in the west and to promote a new understanding of science, culture, beauty, history, the arts and play.

## Gorgeous Scenic Beauty Enhances Rare Pageantry



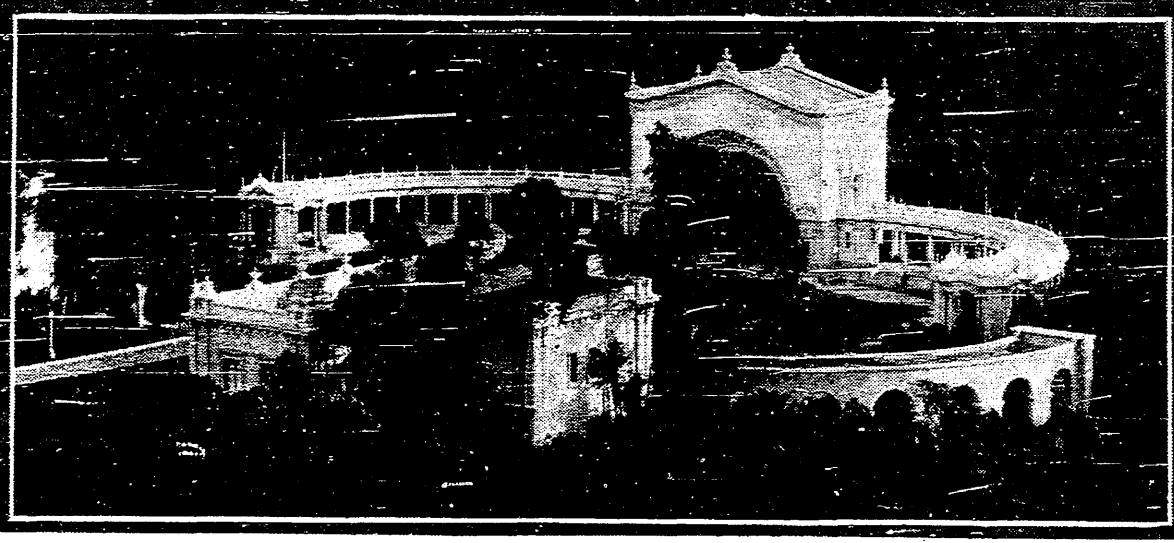
Over this famous Cabrillo bridge, which spans a richly wooded canyon that cuts through Balboa park, millions of visitors will come to see San Diego's Exposition which will open May 29.

## Where Exhibits Will Gladden the Hearts of Women



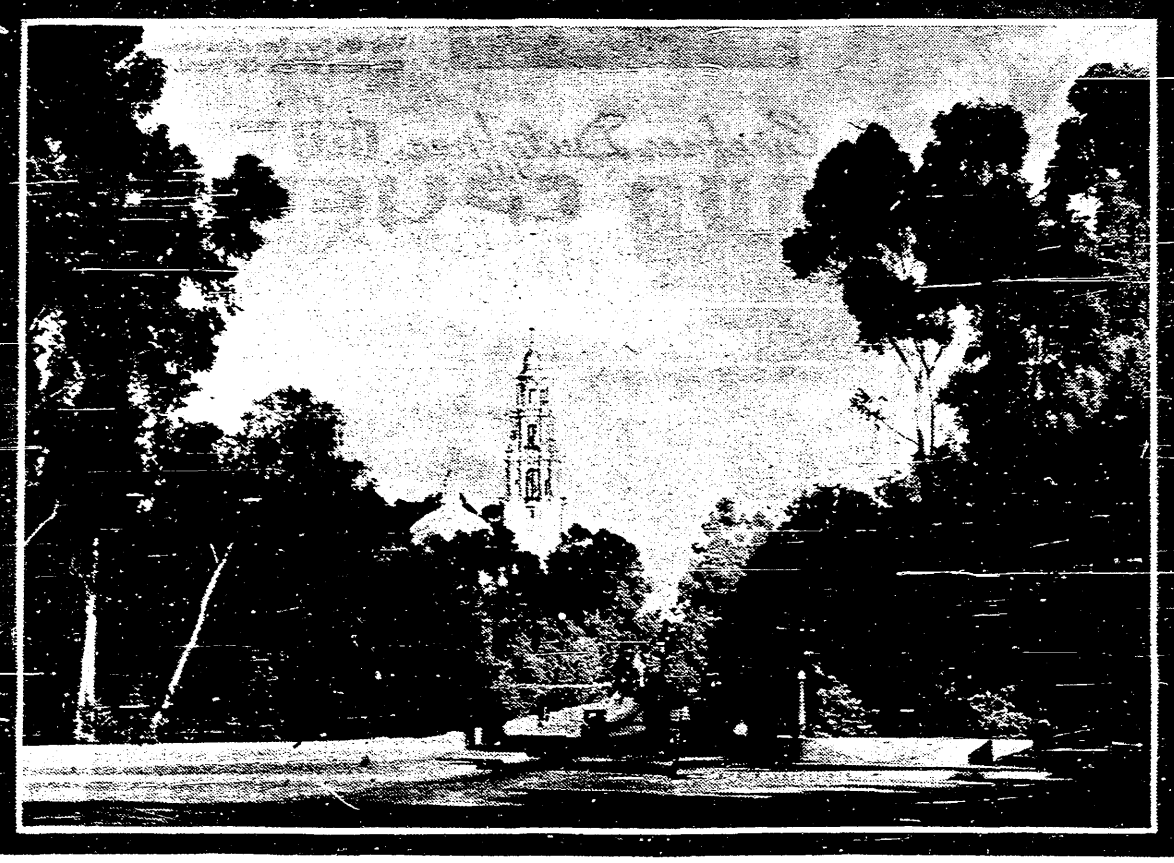
In these magnificent Exposition structures, the Palace of Education and the Women's Palace, will be presented interesting exhibits picturing world progress in education and featuring the many cultural and edifying perquisites that aid in making woman's life more satisfying.

## Outstanding Musicians Will Play at Exposition



One of the finest cultural features of San Diego's Exposition will be the many recitals which will be played on the famous Spreckels outdoor organ. This excellent instrument is surrounded by a beautiful architectural design in white against a background of green foliage.

## Millions of Visitors Will Enter Expo Grounds Here



One of the richest scenes of natural beauty in famous Balboa park presents itself at the west end of Cabrillo bridge where the emerald green of clustered trees forms a setting for the glistening, jeweled tower of the Palace of Science.

## ENTRIES IN SALON OF PHOTOGRAPHY ARE NUMEROUS

When the Palace of Photography of the California Pacific International Exposition opens May 29, many nations will be represented in the fifth annual salon of photography, one of the outstanding photographic events of the year.

Entries in this exhibit have been received from England, Germany, Belgium, Romania, Austria, Switzerland, Czechoslovakia, Japan, China and Mexico, while inquiries have been received from camera artists in many other parts of the world.

John Sirigo, official photographer for America's Exposition, states that this photographic display will be one of the most extensive in the history of photography.

## SAN DIEGO POLICE WILL WEAR NEW EXPO UNIFORMS

San Diego's police department, headed by George Sears as chief, may not be the largest force in California, but it is considered by law-enforcement experts as one of the most efficient. And with the opening of the California Pacific International Exposition every man on the department from Chief Sears down to the driver of the hurry-up wagon will be clad in new, blue uniforms, which will be distinctive in that they will be worn with Sam Browne belts.

Despite the fact that San Diego's geographical location makes it almost impossible for criminals to operate here, the San Diego police department, composed of 200 men, is called upon to patrol almost 100 square miles of territory. To do this efficiently, in addition to central station downtown, there are police sub-stations in La Jolla, Ocean Beach and East San Diego.

A special police detail has been provided to handle the exposition crowds and keep a sharp look-out for their safety.

**City 'Walled In'**  
Because San Diego virtually is "walled-in" by mountains, there are only three highways of escape for a criminal after a "big job" here. Those roads lead to the north, east and south to the Mexican border and can be "bottled up" on a minute's notice.

Adding to the efficiency of the San Diego police department is an elaborate and smooth-working radio prowl car system. About a dozen radio cars are on duty every hour of the day or night.

Thus, persons needing police assistance call central station, which relays the call to the police broadcasting station in Balboa park and soon two officers are at the place where help is needed.

A careful check of police records shows that the average call for help is answered in about 30 seconds and that frequently the criminal is captured as he leaves the place where he has committed the crime.

**Hospital Maintained**  
San Diego's police department also maintains its own emergency hospital and ambulance service. For instance, persons hurt in an auto accident are given police medical treatment at the scene of the accident or at the emergency hospital and then taken to a hospital or their home, which ever may be necessary.

Members of the department also maintain their own pistol range on the edge of the city and through practice many of the officers have become expert marksmen.

## LOCAL VETERANS' POSTS READY TO AID EXPOSITION

Veterans' organizations of San Diego are making plans to welcome thousands of their fellow members from all over the nation during the period of the Exposition.

American Legion posts, Veterans of Foreign Wars posts, Disabled American Veterans chapters, United Spanish-American War Veterans camps and other groups all will take an active part in entertainment activities. Almost all of these organizations have volunteer committees which will be called upon to aid in the work.

Already, American Legion posts have come forward to make their contribution to the success of the Exposition. They have given up their splendid meeting place, the American Legion building in Balboa park, for use as one of the units of the Exposition. During the period of the fair, these posts will meet in the Canadian Legion building, in another part of Balboa park.

Another Legion Exposition activity is its campaign, now underway, to have all main highways of the county, which will bring visitors to the fair, cleaned and placed in first class condition. Owners of private property along the roads will be urged to clean up and paint up so that visitors will receive a good first impression.

Perhaps no group is looking forward to the Exposition period more eagerly than the local post of the Canadian Legion. The fair, the Exposition will be in operation is expected to draw more than 2000 of the members from the United States and Canada to the Canadian Legion's state convention here July 1 to 4.

Special Veterans' days are planned during the Exposition and veteran groups, with their colorful uniforms, bands and drum corps will take part in parades and be available for appearances at Exposition events.

## Unique Displays Are Offered by Science Palace

The San Diego Palace of Science, occupying the entire California quadrangle at the east end of Cabrillo bridge, is housed in the only permanent building of the 1915-16 Exposition group, a masterpiece of Spanish renaissance architecture. It is the oldest Balboa park institution, having grown out of the last great exposition and acts as trustee for the people of San Diego in keeping the vast, and in many cases now priceless collections, intact for all time.

As early as 1912, it was hoped that at least some permanent educational exhibits might remain in San Diego at the close of the exposition and with that end in view, plans were made for carrying out this hope.

Through close cooperation with the Smithsonian Institution and the Archaeological Institute of America, visits were made to all the more important European museums and expeditions were organized to study ancient mounds, caves and tombs, as well as to visit the settlements of the most primitive living peoples in different parts of the world.

Expeditions led by notable scientists were sent to Asia, Africa, South America, the South Seas and the Arctic regions. This resulted in getting original and thoroughly authentic data, photographs and casts which were used in making replicas, miniature models and busts.

**Monuments on Display**  
The main floor of the California building is devoted chiefly to Mexican and Central American archaeology. Here we find replicas of the Mayan monuments, cast from the originals in the thick jungles of Guatemala and Yucatan. These monuments, often weighing several tons, are elaborately carved with hieroglyphics and portraits of important personages and are especially fine examples of the stone-cutting art, as they were made by a people possessing neither steel nor bronze.

Small clay and stone figurines, pottery and other ethnological collections from the same region are also found here. On this main floor are also the habitat groups, life-sized models of Indians in various occupations, mining and working copper, quarrying obsidian and stone, making arrowheads. These groups are so realistic that visitors have, on occasion, asked whether this is the museum which displays the "stuffed" Indians.

In the upper galleries is the Jessop archery collection, probably the finest of its kind in the world, which contains comparative types of bows and arrows and other weapons used in the far corners of the world.

The main second floor exhibits are devoted to North America. The balcony showing the Indians of southern California probably attracts greatest attention. This collection is the most representative, authoritative and complete one covering this territory and was in large measure made possible through the receipt of government grants, in 1929 and 1930. Other second floor exhibits represent Egypt, Greece, Asia and the South Seas.

**Casts Exhibited**  
Probably the museum's most widely known exhibit is that in physical anthropology, for many years a model of its kind for the entire country. Here are shown casts from living subjects the various races of mankind, also the individual development from childhood to old age. Physical growth and variation in man are so adequately portrayed that hundreds of San Diego students visit the exhibits within each year to supplement their studies.

Another important section consists of plaster portraits and skeletal casts of extinct prehistoric races of mankind.

The Saint Francis chapel is also in the San Diego museum. Its quaint charm and beauty are well known. It is typical of small chapels of its kind with thick walls, rough-hewn beams and candlelight. Its altar was at one time a part of a small private chapel in Mexico.

**Mayan Monument**  
In the Palace of Science are huge replicas of monuments erected by the Mayans in the jungles of Guatemala and Yucatan.