

On motion of Councilman Wansley, seconded by Councilman Wurfel, Resolution No. 63939, recorded in Book 59 of Resolutions, authorizing the interested City Departments to arrange for a page advertisement in the "Mail Away" edition of the San Diego Union, at a cost of not to exceed \$325.00, copy used to be approved by the City Manager; and also authorizing the interested City Departments to arrange for a page advertisement in the Annual Edition of the San Diego Sun, at a cost of not to exceed \$240.00, copy to be approved by the City Manager, was adopted.

On motion of Councilman Bennett, seconded by Councilman Wansley, the draft of the proposed ordinance regulating the cutting, breaking or removal of curbing and sidewalks and the installation of driveways, as submitted by the Traffic Commission, was ordered sent to the City Attorney for the reinstatement of the retroactive feature of the previous ordinance.

Communication from F. M. Lockwood relative to the proposed construction of tennis courts in the Mission Hills section under W.P.A. project, was read and on motion of Councilman Wansley, seconded by Councilman Wurfel, ordered filed, together with all papers pertaining thereto.

Erwin relative to vaccination of dogs, was read by Councilman Wurfel, placed on the agenda of the ordinance on the subject was

Erwin protesting against the repeal of the ordinance on the table for the same reason.

On motion of Councilman Wansley, seconded by Councilman Wurfel, Resolutions, requesting the City Manager to re-equip stations throughout the City of San Diego, was adopted. Councilman Wurfel voted Nay.

On motion of Councilman Wansley, seconded by Councilman Wurfel, Resolutions, requesting the City Manager to furnish the City Pound, was adopted.

Communication from the City Engineer relative to the land as of January 20, 1936, was presented for perusal by the Councilmen.

On motion of Councilman Wansley, seconded by Councilman Wurfel, the City Manager, recommended the furnishing of electric current for the starting of proceedings against the nudist colony. Councilman Wansley, seconded by Councilman Wurfel, ordered the necessary papers to start

Communications regarding the operation of a Nudist Colony at the coming Exposition in Balboa Park were presented from the following:

The Womens Alliance, First Unitarian Church protesting against a nudist colony.

Protest of Ocean Beach Women's Christian Temperance Union against nudist colony.

Protest of Women's Council of Point Loma Methodist Episcopal Church against nudist colony at the exposition.

Communication from San Diego Council, National Council of Catholic Women, et al, protesting against exhibitions of nudism at the coming exposition.

Communication from San Diego County W. C. T. U. protesting against nudist colony in the exposition.

Communication from Elizabeth Bahl, corresponding secretary of the San Diego Braille Club, Inc., stating the position of the club on the nudist colony question. After a lengthy argument, on motion of Councilman Bennett, seconded by Councilman Wansley, all communications were ordered filed and the protestants notified that the Ordinance regulating the Exposition in Balboa Park provides that anything indecent and offensive can be closed.

Communication from Traffic Commission recommending that no change be made in the Ordinance regulating Taxicabs, was read and on motion of Councilman Bennett, seconded by Councilman Wansley, ordered filed; together with petition of Edward J. Horning for an amendment to the ordinance. Councilman Siebert voted Nay.

The Communication from Louis Cowles relative to the Civic Center plans was referred to Councilman Siebert.

The communication from Mission Beach Women's Club relative to recent case of drowning at Mission Beach, was referred to the City Manager.

On motion of Councilman Wansley, seconded by Councilman Wurfel, the communication from City Planning Commission relative to proposed fishing pier for Sunset Cliffs, was read and filed.

On motion of Councilman Bennett, seconded by Councilman Wansley, the communication from H. J. Deveraux relative to fishing pier at Sunset Cliffs was read and filed.

Communication from City Attorney submitting form of an ordinance appropriating the sum of \$1500.00 from the Unappropriated Balance Fund for compensation of Andrew Ervast in the case of Coronado Water Company vs. City of San Diego, was read and filed.

1/28/1936

Common Council  
meeting

Protests against  
nudist colony



Memorandum of discussion between the Committees representing the City Council of the City of San Diego, and the Directors of the Exposition Company.

-----

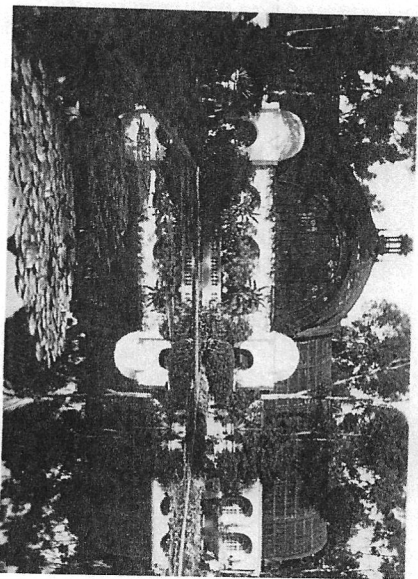
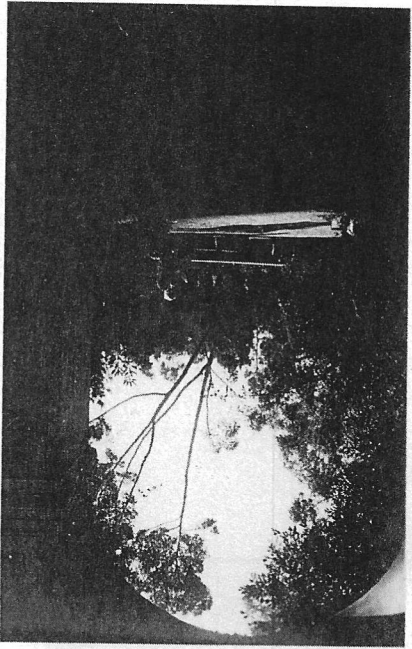
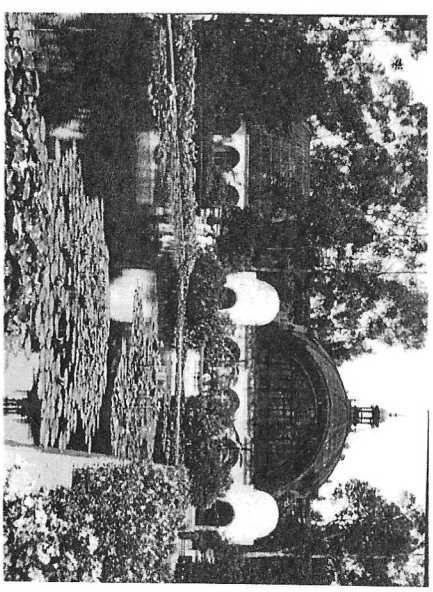
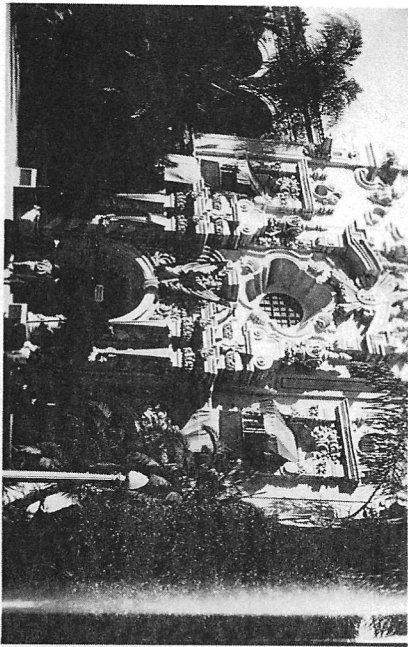
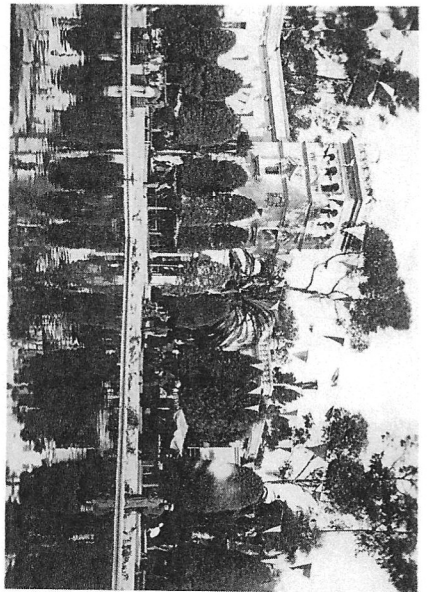
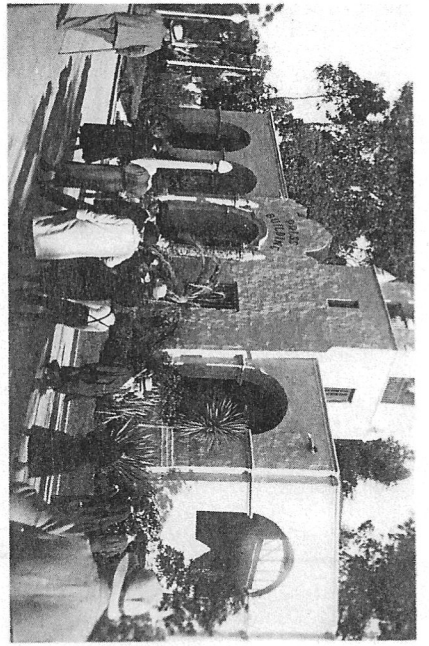
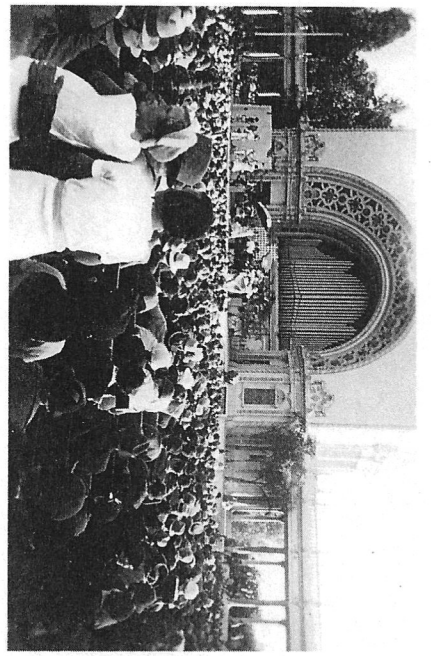
It was the sense of the joint meeting of the representatives of the Council, of the City of San Diego, and the Board of Directors of the Exposition Company, that the City could not legally or actually pay any of the expense of the Fire protection or Police protection incident to the maintenance of the Exposition for the period ending June 30th, 1935, due to the existing Ordinance and the condition of the City's budget.

It was the sense of the meeting, however, that there is some moral obligation upon the City to provide additional Fire and Police protection to its citizens, visitors and their property, incident to the Exposition.

Out of a feeling of mutual confidence and desire to co-operate, the following proposed plan was evolved:

1. That the Exposition Company, in accordance with the existing Ordinance, No. 542, immediately pay to the City all sums heretofore billed and now due the City under said Ordinance.
2. That the City Manager prepare an estimate of the cost of such additional Police and Fire protection, (also Police equipment) for the ensuing period to June 30th, 1935, which amount shall be approved immediately by the Exposition Company for reimbursement to the City, upon bills being duly rendered, in accordance with the Ordinance.
3. That it is roughly estimated that items one and two will call for reimbursement to the City by the Exposition Company in the approximate amount of ten thousand dollars (\$10,000.00) and that the cost of the equipment referred to will not exceed nine hundred dollars (\$900.00).
4. That the Council shall promptly proceed to amend Ordinance No. 542 to eliminate the last paragraph in Section 3, providing for a payment by the Exposition Company to the City, with relation to the cost of additional Police and Fire protection in the Park, - such amendment to be effective as of July 1st, 1935.
5. That in consideration of said amendment to Ordinance No. 542, the Exposition Company will not only do the things set out in items one and two, but will give a clear bill-of-sale to the City for one practically new fire engine of approximate value ten thousand dollars, (\$10,000.00) now located in the Fire Station in Balboa Park.
6. That nothing in this plan contemplates the operation of the Exposition beyond November eleventh, and shall not bind either party after that date.

Accepted  
on behalf of the Board  
of Directors  
of the Exposition Company  
Public Relations  
Chairman  
May 21-1935





Germany's Garden Exhibit at the California Pacific International Exposition. The above illustration gives a partial view of the grounds where thousands of blooming plants and velvety green lawns combine in a glorious display of color that has won high praise from the throngs daily visiting the exposition.

Germany's Garden Exhibit at the California Pacific International Exposition.

## HOW TO ORDER BY MAIL

Use the order sheet enclosed in catalogue if possible. In the space reserved for address write plainly your name, post office, nearest express or freight office (if different from address office), County and State. Keep a duplicate copy of your order for comparison.

Remittances may be made by Express Money Order, P. O. Money Order or Bank Draft. If you remit in stamps or cash, send in a Registered letter. We must decline sending goods C. O. D. unless 25 per cent of their value accompanies the order.

### FREE DELIVERY FOR CERTAIN QUANTITIES OF SEED

We deliver free, in the United States and possessions and Mexico, by Parcel Post or Express at our option, all Vegetable and Flower Seeds by the packet, ounce and  $\frac{1}{4}$  pound and up to and including ten pounds.

All other articles, including bulbs, are priced F. O. B. Los Angeles and will be forwarded express collect or, if desired by parcel post, postage must be added as per the following table.

**PARCEL POST**—Shipments of seeds, bulbs, tools, plants and garden supplies (excluding certain insecticides containing poisons and all liquids) may be sent by mail to all parts of the United States. We advise forwarding all small orders and packages up to 20 pounds in this way.

Packages of seed weighing 8 oz or less can be forwarded anywhere in the United States at a cost of 1c for each 2 ozs. or fraction thereof.

**INSURANCE EXTRA**—5c for each pkg. up to \$5, 8c up to \$25, 10c up to \$50, 00.

## Visit Our Nursery

### In Van Nuys

12 ACRES OF SHRUBS, PLANTS AND FLOWERS

You will be delighted by a visit to the new Ger-

| Zone | Distance from Los Angeles | First 1 lb. or Fraction | Additional 1 lb. or Fraction |
|------|---------------------------|-------------------------|------------------------------|
| 1st. | Within 50 miles.....      | 8c                      | 1c                           |
| 2nd. | 50-150 miles.....         | 9c                      | 1c                           |
| 3rd. | 150-300 miles.....        | 10c                     | 2c                           |
| 4th. | 300-600 miles.....        | 11c                     | 4c                           |
| 5th. | 600-1000 miles.....       | 12c                     | 7c                           |
| 6th. | 1000-1400 miles.....      | 14c                     | 9c                           |
| 7th. | 1400-1800 miles.....      | 15c                     | 11c                          |
| 8th. | All over 1800 miles.....  | 15c                     | 11c                          |

Parcel Post Rates Within U. S. and Possessions from Los Angeles, Calif.

### RARE PLANTS FROM ALL OVER THE WORLD

Rare flora from many parts of the world thrive in our Southern California climate. Through their world-wide connections Germany's can offer these exotic plants and shrubs for your selection. See them growing at the new nursery.

### A COMPLETE LINE

No matter what you are going to plant, you will find the seed, seedling, bulb, plant, or tree at Germany's, and there is a complete representation of Germany's stock at the North Hollywood nursery and seed store.

HOW TO GET THERE



### CALIFORNIA INTERNATIONAL EXPOSITION

SAN

August 1st to August 31st  
Los Angeles, California

Now that our California friends are all established in the project, an part in it.

Your time spent of handling all through the Exposition to the Exposition to the Exposition. Your lovely display in people every hour's snapshots taken of the fair, you will have a photographic exhibition.

Director, I

Like all reputable has adopted the standards of the American Association.

**NON-WARRANTY** and Plant Company press or implied, a quality, productiveness of seeds, bulbs, plants and they will not be for the crop.