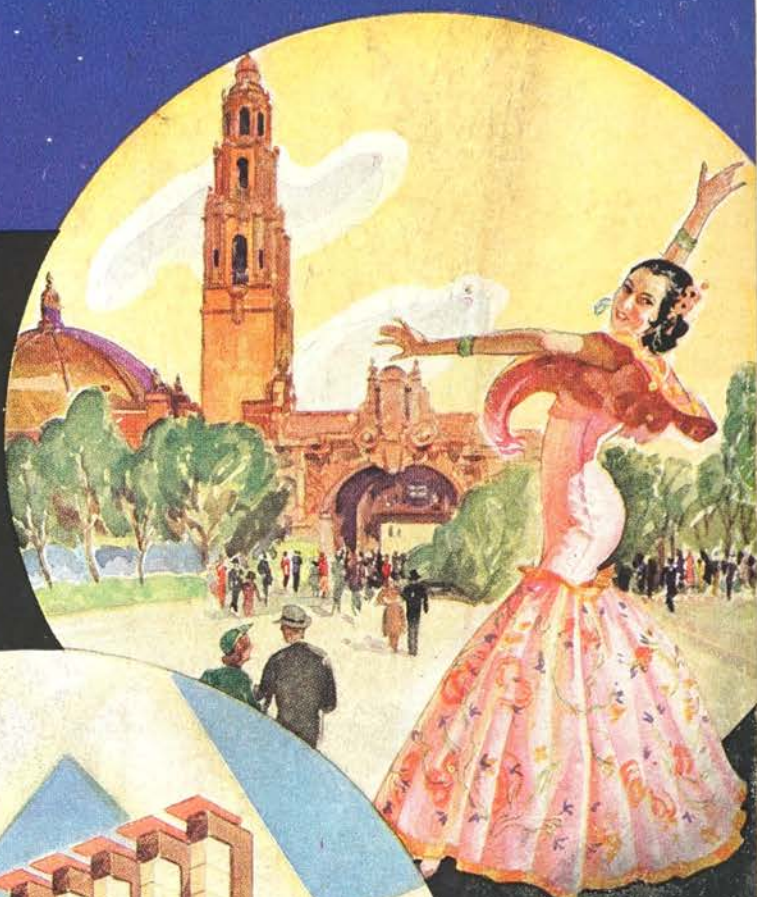


The Highway Traveler



**TEXAS
CENTENNIAL**
Exposition at Dallas



**SAN DIEGO
EXPOSITION**
California

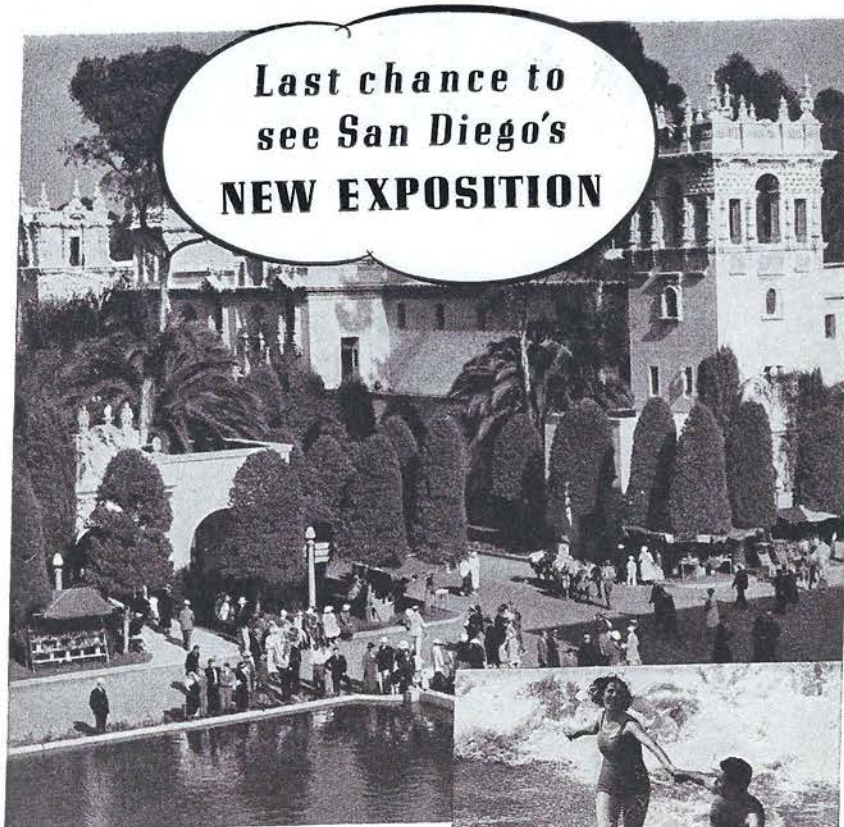


**GREAT LAKES
EXPOSITION**
Cleveland, Ohio

EXPOSITION

NUMBER

**Last chance to
see San Diego's
NEW EXPOSITION**



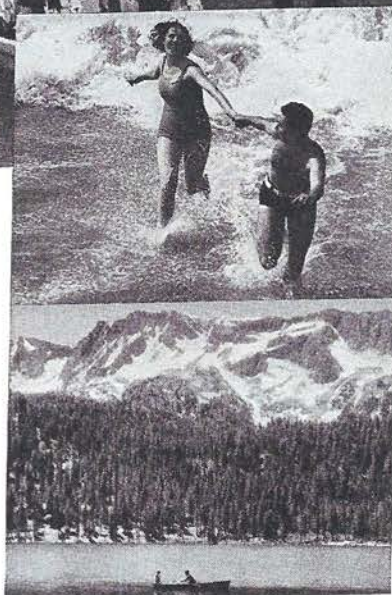
**in one of the world's most
versatile playgrounds**

SAN DIEGO'S 1400-acre Balboa Park is the natural outdoor setting for the new and enlarged 1936 presentation of the California Pacific International Exposition, re-opened this year by public demand after its sensational success in 1935.

Its thrilling and spectacular events, exciting concessions, fun zones and more than 100 interesting free exhibits from all the world are framed unforgettably in the most beautiful background ever given a world fair anywhere...impressive, vine-clad permanent buildings, towering trees, palm-shaded patios, lagoons, gardens and exotic landscaping. To include this great event, closing permanently September 9, this is the year for your California trip.

Out beyond fascinating San Diego Harbor, with its U. S. battle fleet and naval air station, stretches the blue Pacific. In the amazingly varied playground its 200 miles of beaches border, all kinds of contrasting scenes and fun await to make your vacation here a real and thrilling adventure. Here mighty mountains invade the very ocean. Gay cities dot valleys of orange groves and vineyards vie with pleasure islands for your favor. Ancient Missions, modern movie studios, theaters, scintillating night life, every outdoor sport...all these and more are here, with cool nights and rainless days all summer long to make every joy complete.

**SOUTHERN
CALIFORNIA**



FREE: Automatic Trip Planner

This 80-page Official Guide Book—widely acclaimed by travel experts—plans your trip for you from start to finish: what to see and do, how to get here, time required, itemized cost schedules, plus over 100 photographs, maps, etc. . . authentic facts available only through this non-profit, community organization. Coupon brings it FREE by return mail.

ALL-YEAR CLUB OF SOUTHERN CALIFORNIA
Come for a glorious vacation. Advise anyone not to come seeking employment, lest he be disappointed; but for tourists, the attractions are unlimited.

MAIL COUPON TODAY

All-Year Club of Southern California,
Div. HT, 629 So. Hill St., Los Angeles, Calif.

Send me free book with complete details (including costs) of a Southern California vacation. Also send free booklets about counties checked:
☐ Los Angeles, ☐ Santa Barbara, ☐ Orange,
☐ Inyo, ☐ Riverside, ☐ San Diego, ☐ Ventura,
☐ San Bernardino, ☐ Kern, ☐ Imperial.

Name _____
Street _____
City _____
State _____

**THINGS YOU DON'T
WANT TO MISS AT
THE SAN DIEGO
EXPOSITION**

The World's Largest **Mural** in the Palace of Transportation.

The World's Largest **Lighted Stage**.

The One Million Dollar United States **Treasury Bill**.

The Erection of the World's **Largest Bridge** in the California State Building.

The 10,000 **Mechanical Fireflies** in the Alcazar Gardens.

The March of **Motor Coach Travel** in the Palace of Transportation.

The Raging **Forest Fire** in Illusion in the California State Building.

The **Miniature City** of San Francisco in the California State Building.

The World's Largest **Animated Map** in the Shell Information Bureau.

One of the World's **Largest X-Rays** in the Hall of Modern Science.

Child Education of the Future in the Palace of Education.

How Oranges are Packed in the Palace of Foods and Beverages.

Boulder Dam in Operation.

Hatching of Quail by Electricity in the Palace of Electricity.

Lights That **Travel 125 Miles** in the Tower of Jewels.

Aeronautics of the Future in the Palace of Transportation.

The **Jeweled Replica** of the Taj Mahal in the Palace of International Art.

Recording of your Own Voice in the Palace of Electricity.

Mickey Mouse **Sketches** by Walt Disney in the Palace of Fine Arts.

Queen Elizabeth Eating Her Lunch at Falstaff Tavern.

Jewels Worn by **King Tut** in the Palace of Science.

Streamline **Sewing Machines** in the Palace of Better Housing.
Stamp Collectors' **Paradise** in the Federal Building.

Gallery of the World's **Greatest Art** in the Palace of Fine Arts.

Black Widow Spider at Home in the Palace of Natural History.
The Rippling **Oriental Water Rug**.

Hotel of **His Royal Nibs** in Enchanted Land.



San Diego Exposition

SWINGING into its second summer season, the California Pacific International Exposition again is attracting huge crowds from all parts of the nation to San Diego. Highways, bus lines, railroads, steamships and airlines report record-breaking reservations for the summer tourist season.

The Exposition, entirely new and distinct from the one which brought 5,000,000 visitors to San Diego last year, began its second season on February 12, and will continue through September 9. During the three months it was closed, practically every exhibit was changed, new landscaping and lighting designed and a new Amusement Zone constructed.

Special days have been arranged for residents of every state in the union during the summer months. On these days reunions of former residents of the various states will be featured and special ceremonies scheduled. Aside from bringing the former residents together, it also offers a particularly strong incentive for those who still live in the states which are being honored, to come to the Exposition

that day and meet old friends and acquaintances.

In addition to the new exhibits, lighting and landscaping effects, a new policy of entertainment was inaugurated with the 1936 Exposition. Added attractions of major importance and persons of national prominence are being brought to the Exposition for appearances, a continual schedule of entertainment being provided free to those who enter the gates. Any of the attractions scheduled, if seen in a theater, would cost several times the price of admission to the Exposition.

One of the most interesting buildings at the new Exposition is the Palace of Transportation, containing a complete and authentic history of travel. Arranged in consecutive and chronological order, the march of transportation begins with the Roman chariot, the sedan chair, the litter, and on through the various progressive stages to the present day of streamlined trains, buses, airplanes, automobiles and even steamships.

The display contains not only the earliest models of each type of transportation, but continues on and shows

They turn out by the thousands to visit the San Diego Exposition as one can readily see from the picture at the top showing a small portion of the visitors on the Avenue of Palaces with the Arch of the Future in the background. Below is a night scene at the Exposition with the Arch of the Future at the right and the giant outdoor organ and amphitheater in the background.



the evolution of each division before moving to the next.

The most interesting display, from a scientific standpoint, is the gondola of the stratosphere balloon, Explorer II, which ascended 13½ miles into the stratosphere last November 11, setting a new world's record. The gondola itself is on display, along with a number of scientific instruments it carried and a large group of enlarged photographs showing preparations for the ascent, the balloon in the air and its descent and landing. One photograph shows the earth as it appears from the extreme height, over an area of approximately 100 square miles. The photograph looks like a gigantic relief map.

Above the continuous group of transportation relics and extending all the way around the huge, circular building is the world's largest mural, depicting the history of man's attempt to conquer distance. The mural goes much farther back into antiquity and begins with the Stone Age when the only means of travel was by walking. More than 100 scenes are shown in the mural, which covers an area of more than 20,000 square feet, many of the scenes containing several different types of vehicles. The mural was painted by Juan B. Larrinaga, one of the nation's outstanding mural artists. Larrinaga also decorated many of the other buildings in the industrial group at the Exposition.



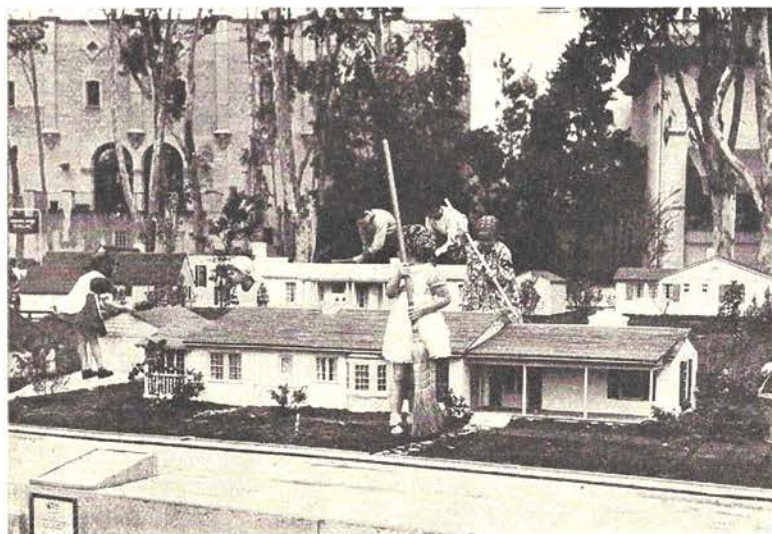
in practical settings. The lighting system at the Exposition has attracted more attention than any other single feature this season. Using the three primary colors of red, blue and green, all synchronized and operated by a series of 20 banks of dimmers, the effect throughout the grounds is that of a moving, blending series of pastel shades, "painting" the buildings, trees, shrubs, pools, fountains and gardens with an exotic beauty.

An entirely new Amusement Zone has been created,

Rebuilt for 1936 Season

Another new building in the industrial area of the Exposition is the Palace of Electricity, where 25 leading manufacturers of appliances and equipment have combined to make one of the outstanding displays at the fair. The building, instead of being a collection of exhibits, each having no connection with the others, has a harmonious interior, each display starting where the other left off, where that is possible. Model kitchens and every modern appliance for the home, office or factory are shown

A view of the grounds of the California Pacific International Exposition at San Diego from the air is shown at the top right while below is pictured tots housecleaning the city of tiny tots, one of the exhibits at the Exposition.



with the landscaping theme of beauty carried out in that area. New shows, new amusements and new, thrilling rides have been installed, making the area unique among midways of the world.

Another popular, new feature is Enchanted Land, an area devoted exclusively to children. Buildings in fantastic designs, a rock candy mountain, animated figures of all the fairyland folk, Bugville, a miniature railroad, miniature rides, slides of every description, all are featured in this section for the children.

With more than 100 exhibit buildings, various areas, including the amusement zone, gardens, plazas, fountains, terraces and other spots of interest, Exposition officials are suggesting that visitors arrange to spend at least a week in San Diego.

In addition to the Exposition, there are many points of scenic interest in the immediate vicinity of San Diego. Point Loma, most southwesterly point of land in the United States, offers one of the world's most inspirational views. The blue, Cuyamaca mountains in the background, the ocean, the bay, fragrant citrus groves, sparkling mountain streams, beautiful, rolling golf courses and scores of other features, all of which can be reached by broad paved roads, are attractions that should not be overlooked. Bus service to and from other points in Southern California makes sightseeing easy and offers the vacationist a maximum of enjoyment every hour of the day. Sightseeing tours of a few hours or a few days duration are afforded visitors by reliable, dependable bus companies, with a personnel trained to point out all places of interest. (Continued on next page)

PALACE OF NATURAL HISTORY

One of the most popular buildings at the San Diego Exposition, from the visitor's viewpoint, is the Palace of Natural History located at your right as you enter the East gate. A trip through this beautiful building is an education in California fauna, plants, birds, mammals, marine animals, fossils, gems and minerals.

One of the most interesting exhibits within the building is the skeleton of the huge 30-foot, duck-billed dinosaur, which is thought to be more than three million years old. Other fossil exhibits are those of a horse of the pre-glacial age, gigantic turtles from the deserts and an eight foot Porthus fish.

In the same building, but in a different section on the first floor, the visitor will see a very interesting hydrographic map of the floor of the Pacific Ocean, constructed to scale and showing the continental shelves of North America and Asia.

New for the 1936 edition of the Exposition is the tropical fish display found in the Palace of Natural History. These fish, contained in 75 tanks, range from the almost microscopic species to the very large, multi-colored types that are rarely seen in this part of the earth. The Siamese fighting fish, a species that carry their young in their mouths, fish that can be drowned and scores of others are shown in these tanks which have been made up to resemble their native haunts.

PALACE OF FOODS AND BEVERAGES

One of the largest buildings on the grounds is devoted to exhibits of leading manufacturers of foods and beverages, the Palace of Foods and Beverages. Especially interesting are the different type machines which are found here manufacturing and packing various foods and beverage products.

In other sections of the building are ovens and kitchens in operation showing the various methods of preparing foods. Dining rooms have been connected with the kitchens so that visitors are served samples of the food and beverage which they have just seen prepared.

PALACE OF BETTER HOUSING

Led by a huge Federal display on better housing, this building is attracting the attention of every visitor to the San Diego Exposition. The modernization of old homes, new construction and various

phases of renovation are emphasized. The Federal Government exhibit was erected at a cost of \$150,000.00. Twelve "talking towers" are placed at intervals over the vast floor space of this building, and from them lectures by housing authorities are given periodically.

The various exhibits include everything to make the home more comfortable and more livable. Furniture, draperies, carpets and rugs, household appliances, in fact, every item that goes to furnishing a home will be found on display somewhere in this building.

PALACE OF FINE ARTS

Probably the most beautiful building on the Exposition grounds, the Palace of Fine Arts, contains scores of priceless paintings and art objects all on display for Exposition visitors and with guides and attendants on hand to explain the various exhibits.

The building itself is of permanent construction and has been open to the public since 1926. Sections have been allotted to the Italian Group of art, another is devoted to Old Spanish, a third devoted to contemporary Mexican art and the fourth devoted to a vast collection of grand old Oriental or Far Eastern arts. Paintings by such old masters as Rembrandt, Rubens, Van Dyke, Lukas, Raeburn, Corot, Goya and Murillo are on display daily. An American Department with paintings from such noted artists as Inness, Chase, Henri, Thayer and Ryder make up a marvelous exhibit of American art.



The ornate Foods and Beverages palace at the San Diego Exposition is set amid beautiful palm trees and lily ponds. Last year it was one of the most popular, from number of visitors, of any building on the exposition grounds.

PALACE OF MEDICAL SCIENCE

One of the largest and most complete scientific exhibits in the United States will be found on the Exposition grounds in the Palace of Medical Science. Leading medical groups of the country cooperated with local and state medical associations in an effort to depict the last word in medical and surgical advancement. Graphic exhibits of diphtheria prevention demonstrations, proper methods of infant feeding, care of milk and other foods are presented.

Lectures by noted medical authorities are made frequently on health measures. A safety exhibit prepared by automobile clubs holds the attention of visitors to the building.

A large amount of space in the building is occupied by commercial displays of prominent manufacturers of pharmaceutical products and makers of medical and surgical supplies. One entire section is given to X-ray and kindred subjects and presented in a manner to interest the person of non-scientific mind.

PALACE OF SCIENCE

In this vast structure will be found the complete story of man, traced back to the dawn of history. The evolution of the human species is graphically portrayed in the Hall of Anthropology where statues, casts and skeletal features of the race have been preserved and presented in a carefully worked out order, enabling the visitor to view not only the physical facts but the actual surroundings and modes of living of what we now call Prehistoric Man.

Tools and weapons used by ancient man form one interesting collection and life-sized figures show the American Indians engaged in their various occupations. These groups are in large glass cases and are so arranged in the Palace of Science that the visitor comes upon them at intervals during a tour of the building.

Central and South American exhibits cover a large area and form one of the most decorative sections of the Palace. Many fine examples of Aztec and Mayan monuments with inscriptions, bas-reliefs and murals from the ruins in Yucatan and Guatemala are in the Archaeological Hall. Baskets, pottery, textiles and carved gourds, together with bronzes, copper and silver work from the Incas of Honduras also make up a very interesting display.

The Philippines and the Orient are represented in the Palace of Science with large displays showing examples of handicraft and art.

The interior of a Mexican mission is reproduced in the famous St. Francis Chapel which adjoins the Palace of Science. The carved wood altar, overlaid with gold leaf, is flanked on both sides by old Mexican religious paintings. The quaint little chapel has been the setting for many weddings and it is rapidly becoming the "Little Church Around The Corner", of the west.

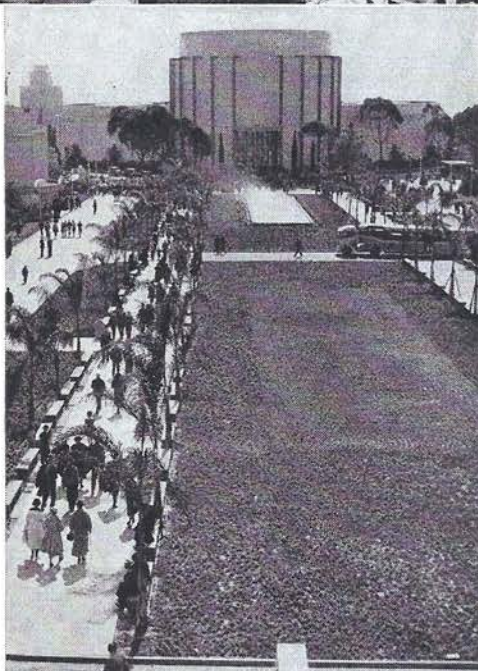


HOUSE OF PACIFIC RELATIONS

Flags of thirty-three nations of the World fly from the House of Pacific Relations, a colorful cluster of cottages nestling in a foliage rimmed area. The natural setting for these cottages, together with the landscaping, makes it one of the most attractive sights on the Exposition ground.

Representatives of each of the thirty-three nations greet their countrymen here and visiting officials make the House of Pacific Relations their headquarters while in San Diego for the Exposition. Cottages are occupied by the British Empire, China, Denmark, Irish Free State, Sweden, Norway, Germany, Mexico, Japan and practically every country
(Continued on Page 69)

Daily concerts by Spanish troubadours in the House of Hospitality are very popular at the California Pacific International Exposition at San Diego. At top is shown a group of visitors being entertained by the troubadours in a patio which was designed after one in a convent at Guadalajara, Mexico. In the center is shown the Tropical Plaza de America at the Exposition with the Transportation Building in the background. At the right is the Fun Zone at the San Diego Exposition, unique for the central flower gardens.



KEY TO LOCATION OF BUILDINGS ON EXPOSITION GROUNDS

30—Canadian Legion	55—Palace of Better Housing	73—Federal Building
35—Spanish Village	57—Cafe of the World	75—Palace of Cities, Counties
36—O'Rourke Inst. of Science	58—Palace of Fine Arts	76—Spreckels Out-Door Organ
38—Lion, Bear, Tiger Grottoes	59—"Tiny Town," Better Housing Project	79—Floral Building
39—Gorilla Cages	60—House of Hospitality	80—Palace of Electricity
40—World's Largest Flying Bird Cage	61—Casa del Rey, Moro Gardens	81—Standard Oil Building
41—Monkey Pool	65—Mayan Hall, Palace of Science	82—Mayan Temple
42—Penguin Pool	66—American Indian Hall	84—House of Pac. Relations
43—Reptile House	67—Salon of Photography	85—Palace of Education
44—Potteries Building	68—California Tower	86—Visual Education Hall
47—Eastern Entrance	69—Anthropological Hall	87—Women's Palace
49—Palace, Natural History	70—Alcazar Gardens	88—Plaza de Estados Unidos
51—Botanical Gardens	71—Palace of Parent, Child	89—Palace, Travel, Trans.
53—Palace, Foods, Beverages		92—Ford Building
54—Zoro Gardens		93—Foreign Palaces

Numbers 1 to 23—Amusements
Numbers 24 to 103—Amusements



things as John Hix's museum of freaks and oddities "Strange As It Seems"; Stanley Graham's famous troupe of midgits; an Ohio maple syrup camp, with maple trees tapped outside the cabin, sap dripping into buckets, and within the building, which will be of logs, the sap will be boiled into syrup; "The World a Million Years Ago", a reproduction of 37 pre-historic animals, birds, reptiles and people, all of which are animated and have sound effects; "Sportsmen's Paradise" will be a novel concession featuring a large pool of clear cold water in which live fish can be angled for, and when caught are cooked for the fisher immediately and served with "chips", English and Canadian term for French fried potatoes.

At the extreme eastern end of the amusement area will be a blimp field with a mooring mast. The blimp will make regular passenger flights over the Exposition and downtown Cleveland. There will be a number of marine concessions—Byrd's South Pole ship, a giant modern submarine, sea planes and a fleet of ten de luxe speedboats.

A fleet of eight large Greyhound buses will provide transportation within the grounds.

ART EXHIBIT

In connection with the Exposition the Cleveland Museum of Art will display a magnificent collection of art masterpieces from all over the world which will be on display during the 100 days of the Exposition. Agents of the museum are in Europe now making arrangements for the loan of various items of the exhibit, and their transportation to Cleveland. Because of fire hazards this collection must be displayed in the art museum outside the Exposition grounds, but it will be easily reached by visitors.

SYMPHONY ORCHESTRA

A great symphony orchestra of eighty musicians, conducted by six of the outstanding orchestra leaders of the country, each of whom will act as guest conductor for a period of one week each, will be a treat for music lovers at the Exposition. The orchestra will give free daily concerts for ten of the fourteen weeks of the Exposition. The other four weeks there will be band concerts in the Symphony Shell.

Concerts will be given every evening except Saturday with matinee and evening concerts on Sundays. Monday evening concerts will be of popular music, selected from the better musical shows. Thursday nights will be "symphony nights" when the works of the great masters will be presented. Other programs will include works new and familiar from the great orchestra literature. A broadcast control room in the shell will enable the concerts to be radioed from local stations and over national networks.

SPECIAL DAYS

Upwards of 400 fraternal, business and civic organizations will have special days dedicated to them, with an ever-changing program of featured activities.

Special days at the Exposition will commemorate great men and women, past and

present, who have brought fame to the Great Lakes region, and will mark the progress of political trends, industrial, business and civic growth. Whenever possible, the dates selected will correspond with some significant event in the lives of the persons to be honored.

MARINE THEATRE

The first attraction announced for the Marine Theatre, built out in the water behind the breakwater, just to the east of the Horticulture building, will be a dazzling display of women's fashions which will be presented twice daily by the May Company. The show will be presented every day at 2:30 and 8:30 p.m. during the entire 100 days of the show. The display, which will be modeled by a large staff of attractive models, will be given in theatrical revue form, and will feature American and foreign styles. It will be given in a gorgeous setting with music from an orchestra in a marine shell.

SAN DIEGO EXPOSITION

(Continued from Page 51)
in Central and South America. During the period of the Exposition each of the nations provides a two-day program characteristic of its people.

PALACE OF EDUCATION

A complete picture of the California Educational System is given the visitor in the Palace of Education. In addition to taking the visitor from kindergarten through college, the importance of home life and its cooperation with the child in school is stressed in this vast building. Besides graphic portrayals of school work, a number of interesting displays from various educational institutions has been arranged for this year.

Something new in the way of an exhibit is shown here in the "hobby" display, a contest in the 152 schools of San Diego county having been used as the medium through which were obtained the many interesting exhibits which explain how the pupils use their leisure time.

CALIFORNIA STATE BUILDING

A panorama of California's vast resources is found in the State Building. From the colorful murals over the main entrance to the last exhibit, the agricultural, mineral, scenic and climatic wonders of California are unfolded in orderly array.

The first thing that strikes the eye upon entering the building is a huge map of the State upon each side of which is found the historic murals. To the right is a map showing a replica of California homes, while a relief map depicts the State's natural resources. Huge exhibits from the various state departments are found throughout the building.

Many counties have individual exhibits emphasizing the resources and attractions—especially to out-of-town visitors. Directly west of the building is a very complete



VISIT WASHINGTON

and stay at

THE LEE HOUSE

Experience our nationally famous hospitality and fine service. Every room with private bath. Sightseeing arranged upon arrival at hotel.

Room and bath for one,
\$2.50 to \$4.00 a day

Room and bath for two,
\$4.00 to \$6.00 a day

Location: Near White House and
Greyhound Terminal

J. A. McMahon
Asst. Manager

Edw. W. Martin
Manager

IF YOU REALLY WANT TO See New York

Visit the **Observatory Roof** atop the 70-story RCA Building in **Rockefeller Center** and get a perfect 50-mile view of the city and the entire metropolitan area!

The fastest elevators in the world will whisk you to the roof, 850 feet above the sidewalks of New York. On a roomy landscaped terrace you will have an unobstructed view in all directions. The only spot of its kind in New York.

Tea and coffee served free to guests. Comfortable deck chairs for lounging. Competent guides to point out places of interest.

RCA BUILDING Rockefeller Center

Between Fifth and Sixth Avenues,
49th to 50th Streets

ADMISSION 40c

CHILDREN 20c

OPEN 10 A.M. TO MIDNIGHT



IN CLEVELAND

When next you visit Cleveland come to the New Carter Hotel. A warm welcome awaits you—prompt, courteous service and delicious food at reasonable prices. Six hundred large, comfortable outside rooms each with private bath and circulating ice water. Exceptional facilities for conventions and sales meetings. Personalized management.

Rates begin at \$2.50

CARTER HOTEL

FAY M. THOMAS, Manager
IN THE HEART OF CLEVELAND



Check
**YOUR BAGGAGE
and PARCELS**
in
**AMERICAN PUBLIC
LOCKERS**
at
GREYHOUND TERMINALS

10c for 24 Hours

"THE KEY IS YOUR CHECK"

AMERICAN LOCKER CO., INC.
A Nation-wide Service

exhibit of game birds and fish native to California.

PALACE OF TRANSPORTATION

Extending to the South end of the Exposition grounds, the Palace of Transportation, built last year by Henry Ford, is the sole example of modern industrial architecture on the Exposition grounds. This permanent structure of steel and concrete this year houses the historic march of transportation. One of the largest exhibits of its kind ever assembled.

With a large collection of relics sent from the Dearborn Museum by Henry Ford, as the background, the exhibits trace the history of transportation in the United States from the days of the primitive ox-cart to the gigantic planes now flying the Pacific Ocean. Extending all the way around the large circular building, the visitor finds a graphic history of man's progress in travel spread before him.

Many of the leading transportation companies serving the United States have colorful and complete exhibits in the building.

GENERAL EXHIBITS BUILDING

The history of man's progress in industry on the Pacific Coast is unfolded by means of murals and miniature manufacturing plants. The building is exactly what its name implies—a structure of varied industries showing the increasing interest in manufacturing and shipping throughout the Pacific Coast region.

PALACE OF ELECTRICITY

One of the most interesting buildings in the entire Exposition, is the Palace of Electricity. Every type of electrical home appliance is shown in one division, while other sections have displays of scientific electrical development showing the many uses to which every day current can be placed.

New inventions, new electrical discoveries and unique apparatus is seen in many exhibits illustrating the flexibility of electricity as a source of power.

THE FEDERAL BUILDING

Outstanding in its architectural design the Federal Building is Aztec in motif as was suggested by the ruins of the Palace of the Governor in Uxmal, Yucatan. The doorway is a reproduction of the entrance to the Palace. The Federal Building houses the extensive exhibits of the United States Government.

The visitor is taken on a complete and comprehensive tour of the various departments such as the Mint, the Post Office, the Bureau of Printing and Engraving, the Army, Navy, and the Coast Guard. Exhibits in each division give a general picture of the vastness and many ramifications of the governmental operation, ranging from the interest in soil erosion to an outright check on the changing population of the nation.

Various government projects, through which it is hoped to develop to a great extent the country's resources, are shown in graphic detail.

Do not hurry through the Federal Building. It is one of the outstanding structures of the Exposition.

ZOOLOGICAL GARDENS

By all means do not fail to visit the Zoo on the Exposition grounds—largest zoo in area in the United States. A few of the special things found within the zoo which you should not miss are: trained seals and other animals in the new arena, every afternoon, the giant 450-year-old turtles, dignified penguins in their aprons of white, mountain gorillas, captured in the upland country of the Belgian Congo, rare fur-bearing sea mammals, Man-O-War birds, nubian ostriches, African water buck, Siberian brown bears, the American antelope.

Practically every form of wild animal in the world is confined in the Zoo and it is well worth the visitor's time to spend at least a day in this part of the Exposition.

ENCHANTED LAND

A new feature for the 1936 season at the San Diego Exposition, Enchanted Land, is a children's Paradise. Here the juvenile visitor will find miniature railway concession rides and other amusement features designed especially for them. The railway with its gaily painted cars depicting Mickey Mouse and other favorites of the kiddies, runs through a tunnel in a miniature mountain, and on the Enchanted Land the visitors see spouting volcanoes, Candy Land, and animated figures from Mother Goose lore. In the entrance to Enchanted Land stand two large animated clown figures who bid the young visitors welcome.

THE HOUSE OF HOSPITALITY

Here is the welcome center of the Exposition. Visiting notables and outstanding persons are received and entertained here and it is the headquarters of federations of state societies and women's organizations. Spacious lounges and roof gardens are pleasing places in which to rest.

The patio of the House of Hospitality is patterned after the famous patio in Guadalupe, Mexico. In the center of which is a white Aztec fountain cut from a 1600-pound block of limestone. In this building also will be found private banquet rooms and the celebrated Casa del Rey Morro Gardens Cafe which overlooks the beautiful surrounding gardens.

MODEL TOWN

On a plot of three acres adjoining the Palace of Better Housing, is Modeltown, where miniature replicas of 56 modern homes have been constructed on miniature landscaped lots. Accompanying each model is a floor plan of the home with complete details as to construction, costs, financing and other information necessary

for the home builder. Modeltown was visited by more than two million persons at the 1935 Exposition and it is thought it will be as popular this year as last.

CCC EXHIBIT

On the ground floor of the Palace of Natural Science is a graphic exhibit arranged by the Civilian Conservation Corps representing a panorama of CCC activities. Fighting forest fires, building trails, controlling soil erosion, clearing forest sites for public camp grounds all are shown in graphic details. An interesting statue over the entrance to the exhibit expresses the keynote of the display "Youth Saves The Soil".

THE OLD GLOBE THEATER

Abridged versions of Shakespeare's comedies and tragedies are presented daily in the Old Globe Theater by the Globe Theater players. The theater is an exact reproduction of Shakespeare's own playhouse originally built in 1599. More than 325,000 persons attended the performances last Summer.

The plays are performed as their author gave them without intermission and with speed and action which rivals the modern movie. The varied repertory includes: "Twelfth Night", "Taming of the Shrew", "As You Like It", "MacBeth", "Hamlet", "Comedy Of Errors", and "Midsummer Night's Dream". English folk dances precede each performance on the village green and adjoining the theater is the Old Curiosity Shop and the Falstaff Tavern specializing in English cookery.

OUTDOOR ORGAN

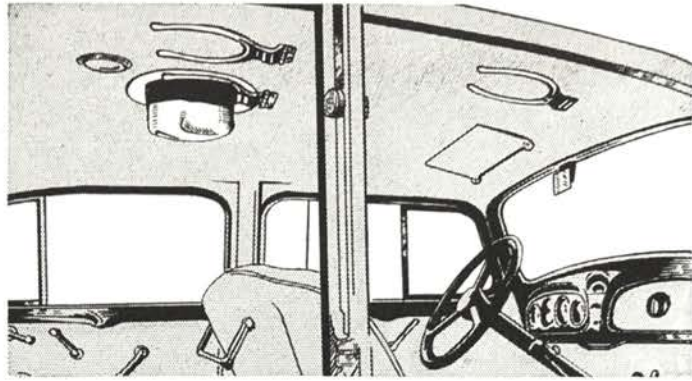
The largest pipe organ ever built is located in a beautiful amphitheater at the south end of the Exposition grounds. It contains cathedral chimes, concert harp, drums and symbols, features impossible to incorporate even in the largest auditorium instruments. Free recitals are given twice daily.

FORD MUSIC BOWL

The vast Ford amphitheater which seats more than 3,000 persons will be the Summer home for five famous symphony orchestras and numerous other large musical organizations during the 1936 Exposition. Each of the five symphony orchestras will play engagements of at least two weeks, with free daily concerts.

ALPHA THE ROBOT

In a specially designed and constructed building in the heart of the Fun Zone is the improved exhibit of Alpha the Robot. Invented and built under the personal supervision of Mr. Harry May, this amazing mechanical man performs feats that are almost human. At a spoken word the 2,000-pound giant of steel, 6 feet 2 inches



THE SUNDELL HAT RACK

can be easily and quickly installed in any private auto for your convenience. Used by Bus Manufacturers and Operators for the benefit of the traveling public. Reasonably priced. For particulars write:

SUNDELL MANUFACTURING CO., Inc.
Ridgway, Pa.

There is a Good Hotel In . . . GENEVA, NEW YORK

THE CENTRE OF THE
FINGER LAKE
REGION

Hotel Seneca

OVERLOOKING SENECA LAKE
RATES FROM
Two Dollars

Excellent Suite Arrangement
For Families and Groups
LAKE TROUT • GOLF • PHEASANT
R. HARDESTY, Manager

"In the Heart of Everything Worth While"

HOTEL HENRY

Absolutely Fireproof
350 Rooms SINGLE ROOM \$1.50 up All
DOUBLE ROOM \$3.00 up Conveniences
RATHSKELLER and TAP ROOM
COMFORT with ECONOMY
Sample Breakfast 35c to 65c Convention
Rooms Luncheon 50c to 75c Facilities
Table d'Hôte Dinner 75c to \$1

PITTSBURGH

GEORGE S. LEHNER, General Manager

In BUFFALO

The wise traveler always stops at the Touraine—in the heart of the city—where they are certain experienced management guarantees the ultimate in contentment.

Rates surprisingly low

Hotel Touraine

Delaware Ave. at Johnson Pk.



Hotel Dalton

1234 So. Wabash Ave.
CHICAGO

Every Room with
Private Bath

Just a Block from Greyhound
Bus Terminal—Red Caps will
bring you to our door.



THE GIBSON WELCOMES YOU TO CINCINNATI

One thousand rooms, each with bath,
70% of all rooms at \$2.50, \$3, \$3.50 and
\$4. Four famous restaurants: Florentine
Room, Rathskeller, Lounge Cafe and
Sandwich Grill. Garage Door Service.
Best location in city. Cincinnati's con-
vention headquarters.

F. W. Pallant, Gen'l Mgr.

HOTEL GIBSON

CINCINNATI

Hotel Roosevelt Chicago, Ill.

• \$30,000.00 spent
in modernizing and
redecorating — new
furniture, new car-
pets.

• The best in rooms
and service at mod-
erate prices . . . 150
rooms at \$1.50 up.

Directly Opposite
Greyhound Terminal

P. S. COOPER, Mgr.





**In NEW YORK the
HOTEL WOODSTOCK is
just next door to the . . .
MIDTOWN BUS TERMINAL**

Here . . . besides accessibility and convenience of "nearness to everything" you will enjoy the homelike atmosphere and hospitality of a hotel that has long been a favorite of travelers. Pleasant rooms and furnishings . . . excellent food and service . . . all at rates that give you more to spend for other things.

DAILY from
\$2.00 Single . . . \$3.00 Double
ROOM AND PRIVATE BATH
From \$2.50 Single . . . \$3.50 Double

Hotel
WOODSTOCK

**43rd St. East of Broadway
NEW YORK**
A KNOTT HOTEL

**SELECTED
BY THE MOTOR
BUS INDUSTRY**

Evidence of the care taken by bus manufacturers to insure dependable, economical service is the selection of Zollner Pistons for engine equipment. Engineered to the high efficiency of modern motor bus operation, Zollner Pistons have performed with unfailing reliability through millions of miles of exacting service. That most buses produced are Zollner equipped is proof of Zollner's outstanding leadership.

ZOLLNER MACHINE WORKS
Fort Wayne, Indiana

ZOLLNER
HEAVY DUTY
Aluminum Alloy
PISTONS

in height, will stand up, sit down, answer questions, smoke cigarettes, blink his eyes, fire a pistol and perform many other startling stunts.

CAFE OF THE WORLD

Dishes typical of the various countries of the World may be ordered in the Cafe of the World, one of the popular restaurants on the Exposition grounds. Continuous stage shows and dancing throughout the afternoon and evening, together with the cocktail lounge presided over by twenty international bar-tenders help make the Cafe of the World one of the most popular spots on the Exposition grounds.

**STANDARD OIL
NATIONAL PARK
TOWER**

Of Mayan architecture with a tower standing 108 feet high, the Standard Oil National Park Tower is dedicated to the National Parks of the country. More than 1,500,000 persons viewed the exhibit during the 1935 season. The exhibit, while along the same general theme, has been greatly enlarged and improved for this year. Visitors are taken on a tour of the leading national parks of the west through an "Illuvision Show". Colorful replicas of national parks scenes with real people in them dissolve into view and then fade away as other scenes take their place.

**CHRISTIAN SCIENCE
MONITOR BUILDING**

An elaborate historical display featuring the new publication house of the Christian Science Publishing Society is contained in the "Monitor" Building. International good-will is stressed as one of the features. The building also contains a number of reading rooms.

SHELL INFORMATION

Complete information about the Exposition buildings and grounds may be obtained at the Shell Building. The building in addition to housing information desks contains comfortable lounges and the largest electrical animated highway map in the World. Highway maps for every state in the Union are available and itineraries are outlined for those who wish to visit scenic attractions and other cities in the West on their return from San Diego. No charge is made for any of these services.

JAPANESE TEA GARDEN

Tucked away in a setting of oriental beauty, the Japanese Tea Garden is one of the land-marks of Balboa Park. Around it much of the present Exposition has been built but in the changing process of creating a World's Fair this slice of the Orient remains unchanged. Tea and rice-cakes are served by quaintly garbed, pretty Japanese girls exactly as they are served in Japan. A wide variety of Japanese foods

is included on the bill-of-fare as well as American dishes.

ZORO GARDENS

What Sally Rand was to the Chicago Century of Progress, the Nudist Colony is to the San Diego Exposition. In Zoro Gardens are the nudists in a beautiful natural setting in a sunken garden. Here the members of the colony live under the open sky, cook and have their being and through their example encourage other persons to appreciate the joys and values of sunlight and natural living out of doors.

The girls and young men live their outdoor life freely and openly within sight of visitors for whom special paths and tiers of raised seats have been provided.

THE FUN ZONE

Scores of new attractions and amusement devices have been added for this Summer in the Fun Zone at the San Diego Exposition. Concession buildings are grouped around a 120-foot central plaza with adjacent green grass and flowering gardens. The old time hurdy-gurdy atmosphere is gone. Each show is separated from adjoining shows but the structures have been planned for harmony. Startling lighting effects make the Fun Zone a gala meeting place at night.

HOLLYWOOD SECRETS—Inside tricks of making talkies are shown here. Such movie wizardries as "dubbing" of sound of film, "playbacks" of sound scenes just filmed and many other strange quirks of film producing are demonstrated.

"DANSE OF THE FOLLIES"—Lovely girls representing the nations of the World are seen in this extravaganza of pulchritude.

THE DEATH RAY—With much black magic the so-called "Death Ray" is one of the popular spots in the Fun Zone.

FUN HOUSE—Six attractions including the barrel roll, Alpine slide and a number of other rides are found here.

STRANGE AS IT SEEMS—Oddities from all parts of the World are seen at this side-show and museum. All exhibits in "Strange As It Seems" are seen here for the first time.

**Vancouver's Golden
Jubilee**

(Continued from Page 45)

ding and pastoral dramas; music everywhere expressing a happy people.

MILITIA IN REVIEW—The Scarlet-coated Royal Canadian Mounted Police demonstrating their superb horsemanship; units in full parade regalia; military bands; the skirl of the bag-pipes and the stirring strains of life and drum.

THE SPORT OF KINGS—Pounding hoofs, the swelling roar of the crowd; thoroughbreds on the home stretch while your heart-beats quicken. Thrilling hand-caps and attractive purses.

CHAMPIONSHIPS—Golf and Tennis tournaments; Olympic stars of track and field; baseball, speedy lacrosse and that fine Old Land sport—Cricket; and never-